



# The Old Baths - Block B - Apartment 29



# The Old Baths Garston

NB: All details are correct at the time of publication.

## About this development

The Old Baths is a brand-new development of contemporary one and two-bedroom apartments, created on the historic site of the former Garston Public Baths. Blending modern living with a distinctive local heritage, it offers a unique place to call home.

## This home

Situated on the second floor, this two-bedroom, three-person apartment offers an elevated position with a bright, open-plan kitchen, living and dining area. The home also includes two well-proportioned bedrooms, ensuite, a modern bathroom, a welcoming hallway and a convenient storeroom.

## Home highlights

- EPC A energy efficiency rating
- EV charging available in parking area
- Energy-efficient heating & hot water system
- Carpets included
- Fridge, freezer, oven, hob and hood included

# Apartment 29

## Floor plan

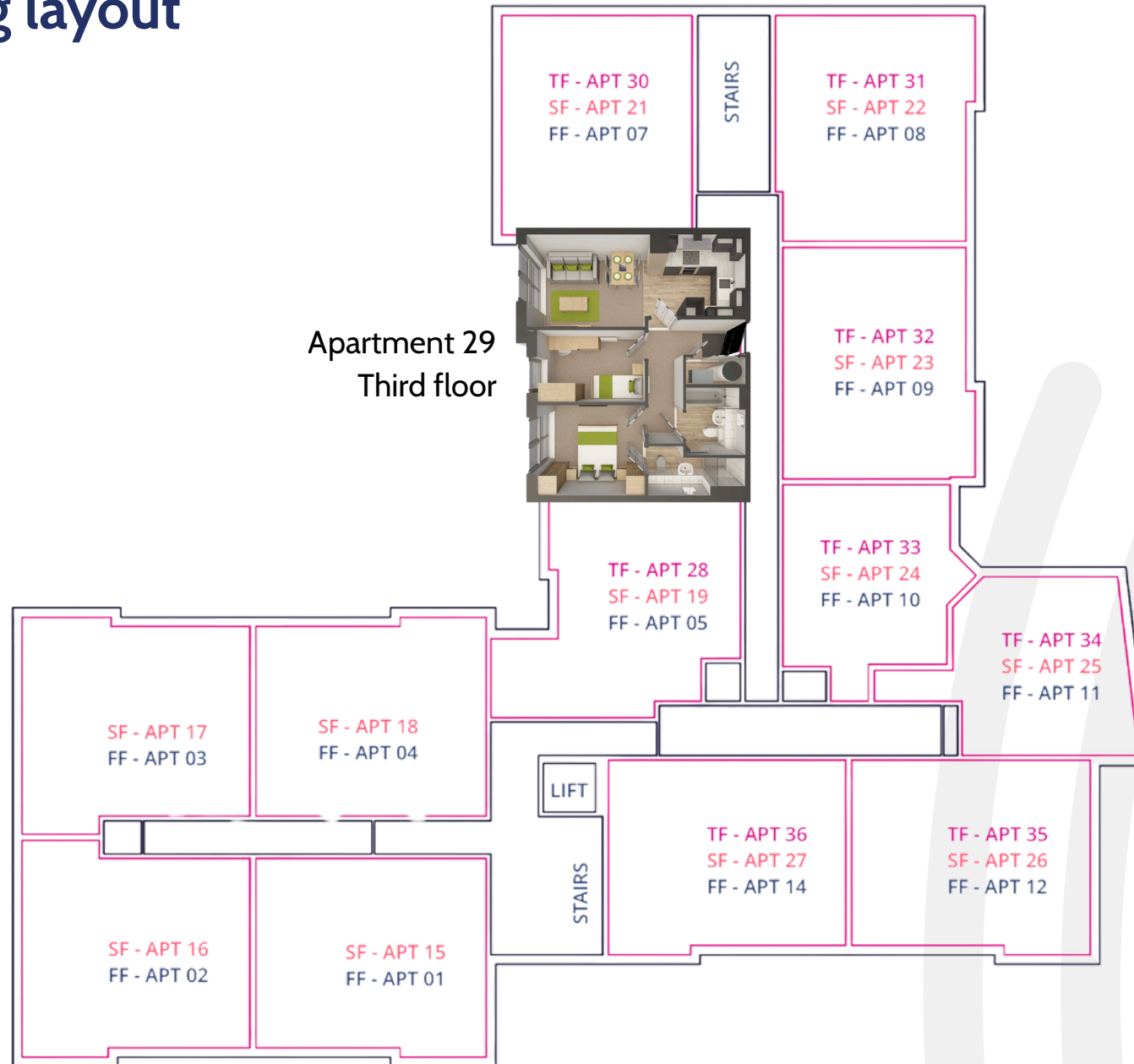


| Room                | Dimensions |
|---------------------|------------|
| Living room/kitchen | 6.9x2.8m   |
| Bedroom 1           | 3.1x4.6m   |
| Bedroom 2           | 3.5x2.1m   |
| Bathroom            | 1.9x2.1m   |
| Ensuite             | 3.0x1.2m   |

NB: All dimensions are approximate. Furniture layouts are for illustrative purposes only.

# Building layout Block B

Key  
FF - First floor  
SF - Second floor  
TF - Third floor



# Development layout



Great homes.  
Strong communities.  
Bright futures.



[southliverpoolhomes.co.uk/new-developments](https://southliverpoolhomes.co.uk/new-developments)

Disclaimer:

All information in this brochure is provided in good faith and reflects details available at the time of publication. As this is a new-build home, specifications, layouts and finishes may be subject to change as the development progresses. Floorplans, visuals and room dimensions are included to give a helpful guide to the layout and scale of the home; however, all measurements are approximate and should not be relied upon as exact. Images, layouts and plans are for illustrative purposes only. Customers are encouraged to check details on site or contact South Liverpool Homes before making a decision.